

Push Button Switch P7,P9 Series



SPECIFICA

Electrical Rating : 1A 250VAC/3A 125VAC
 Mechanical life: Over 30,000 cycles
 Electrical life: Over 10,000 cycles
 Contact resistance: <20mΩ
 Insulation resistance: >1000MΩ

MATERIALS

Housing: ABS Brass(P7)
 Button: PA66 ABS(P7)
 Base: Phenolic PA66(P7)
 Terminal: Brass alloy silver plated
 Spring: Steel wire
 Screw: Brass alloy Nickel plated
 Washer: Stainless steel

HOW TO ORDER

P7 Series	B Function	K Knob Color
P7	A OFF-ON	K Black
P9-1	B OFF-(ON)	W White
P9-2	C ON-(OFF)	G Gray
P9-3	() Momentary	O Orange
P9-4		R Red
P9-6		M Green
P9-7		Y Yellow
		B Blue

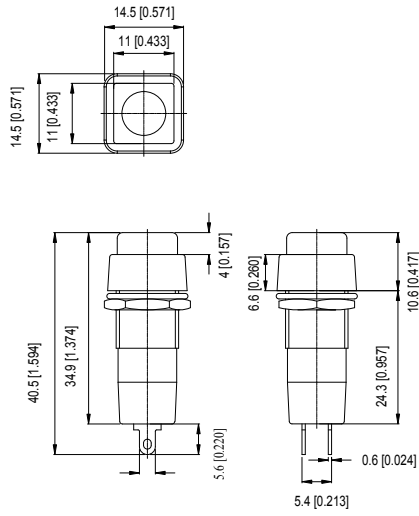
BUTTON COLOR CHART

Color No.	Color	Color No.	Color
1	White	6	Green
2	Black	7	Blue
3	Red(std.)	8	Brown
4	Orange	9	Gray
5	Yellow		

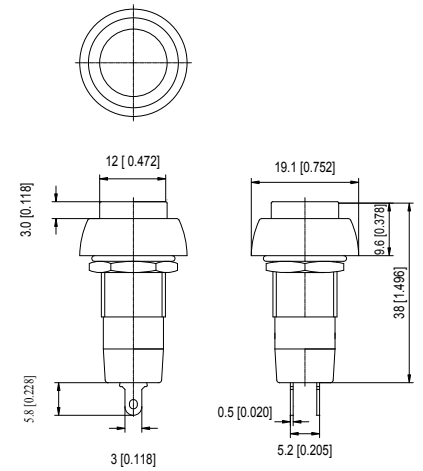
Push Button Switch P7,P9 Series

Dimension

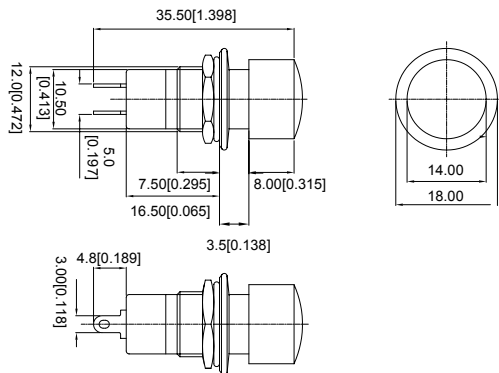
Model NO. Type
P9-2A OFF-ON
P9-2B OFF-(ON)



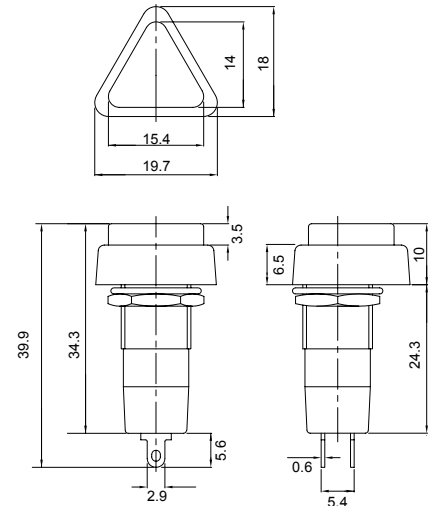
Model NO. Type
P9-3A OFF-ON
P9-3B OFF-(ON)



Model NO. Type
P9-4A OFF-ON
P9-4B OFF-(ON)



Model NO. Type
P9-6A OFF-ON
P9-6B OFF-(ON)



Model NO. Type
P7-B OFF-(ON)
P7-C OFF-(ON)

